

FEATURE: Intelligent Project Management (IPM)

IPM is a new feature of StreamlineDB v5.0.

IPM is a time saving feature. Use it once, and it will probably save you an hour!

IPM was designed to solve to following problem.

- 1) Save job
- 2) Recall job
- 3) Optionally/Partially re-use

Defined

Save job – this is pretty straight forward. As the user processes each table object, save the setting to be recalled later.

Recall job – this too is pretty straight forward. The user has already used StreamlineDB to process a table, now they would like to re-call the values they previously chose.

Optionally / Partially re-use - this is not so straight forward.

Optionally – the user may or may not what to use the previous setting.

Partially – the user may only want to use part of the saved project.

As you can see from above, solving this type of project management problem will make the user more productive.

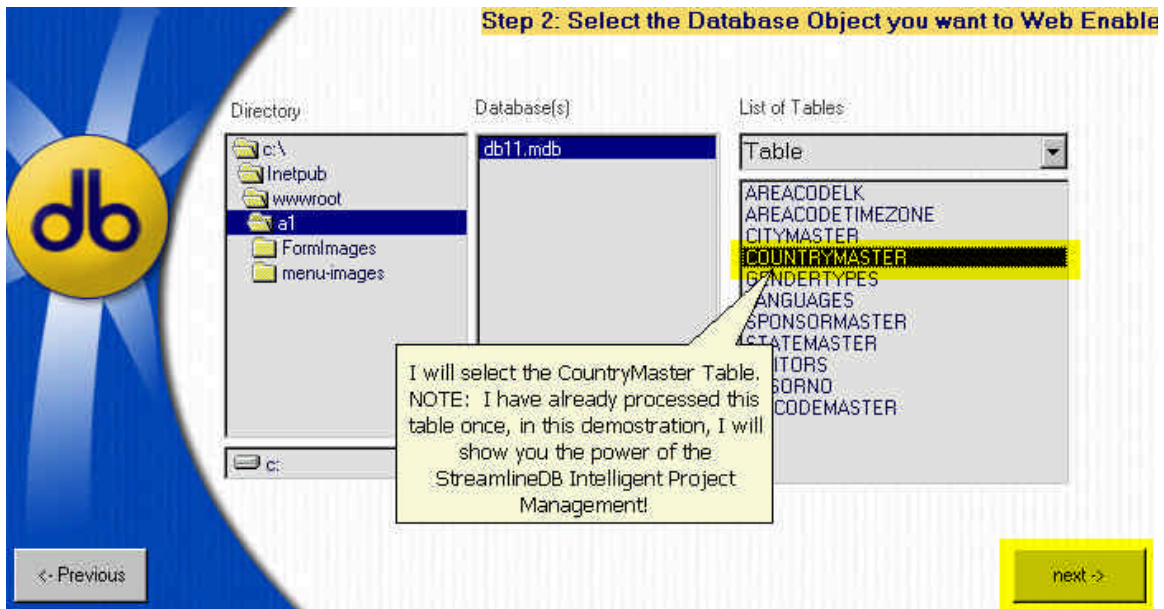


Figure 1

In **Figure 1**, I selected a table that has already been processed.

- 1) I added a column called 'DISPLAYABLE'
- 2) I removed a column called 'ISO_COUNTRY'

Let's see how IPM will adjust to the following table changes.

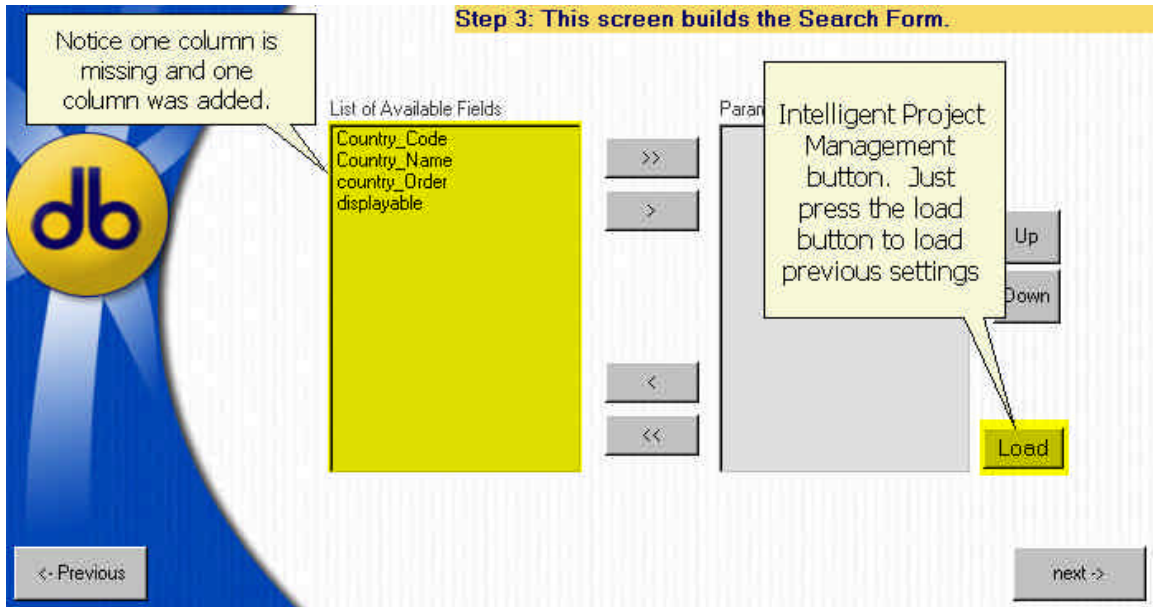


Figure 2

In **Figure 2**, notice the added and removed columns. To “Load” the previous setting, just press the “Load” button.

NOTE: Loading the previous defined settings is *optional*. It is quite possible you want to start over!

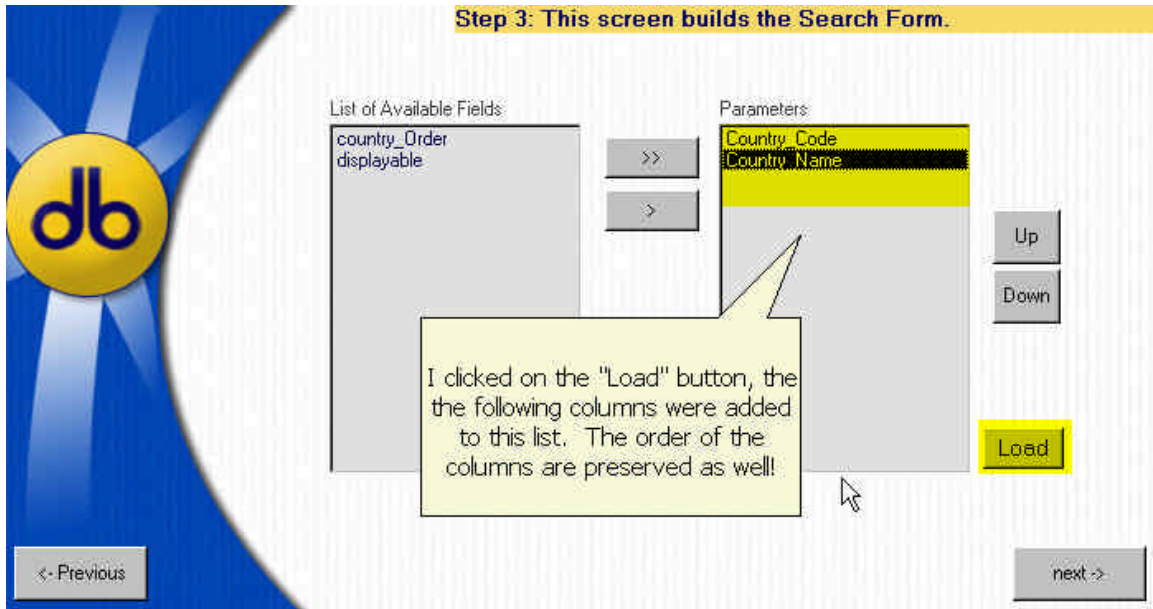


Figure 3

Intelligent Project Management is that simple. Each step in the StreamlineDB wizard has a "Load" button. If your table has already been processed, then you automatically have project setting you can recall.

FAQ:

Question: What if I change the table design, does IPM still work?

Answer: YES! Table design is a tedious process, and it is very possible, you forgot a column, and just needed to add a column to your table design. It is also possible that a particular column is no longer necessary, so you remove it. As you alter your table design, IPM, is self aware, and it will only chose the "columns" it has seen before.